

COOKTOP

600mm

ICC6GE1



- 4 zones including 1 Dual Extension Zone
- Digital Touch Control
- LED Indicator Display
- Timer Function
- Easy clean ceramic glass
- Child lock
- Bevelled Edge
- 9 Power settings

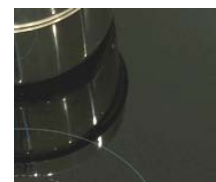
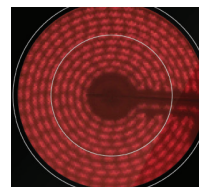
features

specifications

Total Load: 6.4kW (26.7 amp hardwired)
Power: 220 - 240V/50Hz

Dual extension zone

Easy to clean ceramic glass surface



dimensions

Product Dimensions: 590 mm (W) x 520 mm (D) x 50 mm (H)
Cut out Dimensions: 570 mm (W) x 500 mm (D)

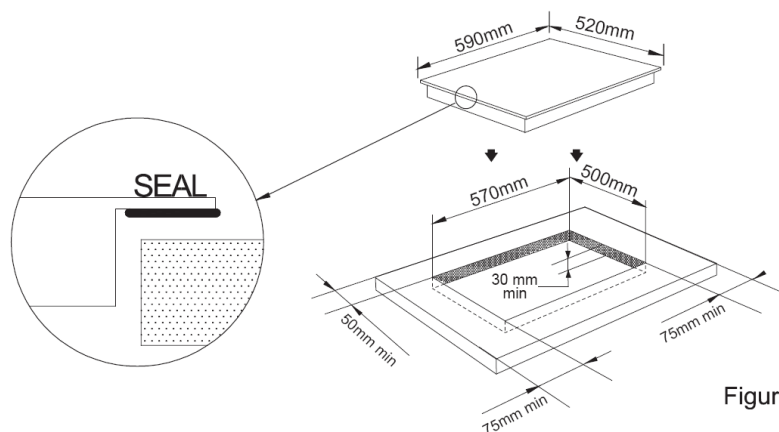


Figure (1)

warranty - customer service

Warranty

2 years Parts and Labour

Customer Service

Our Nationwide Service Team can be contacted on our Toll Free Customer Service Number 1800 805 300 or by logging on to <http://customersupport.hapl.com.au/>

HOME APPLIANCES

20 Carlotta Street
 Artarmon NSW 2064
 T: 02 9958 3111
 F: 02 9958 3555
 E: info@hapl.com.au

www.hapl.com.au